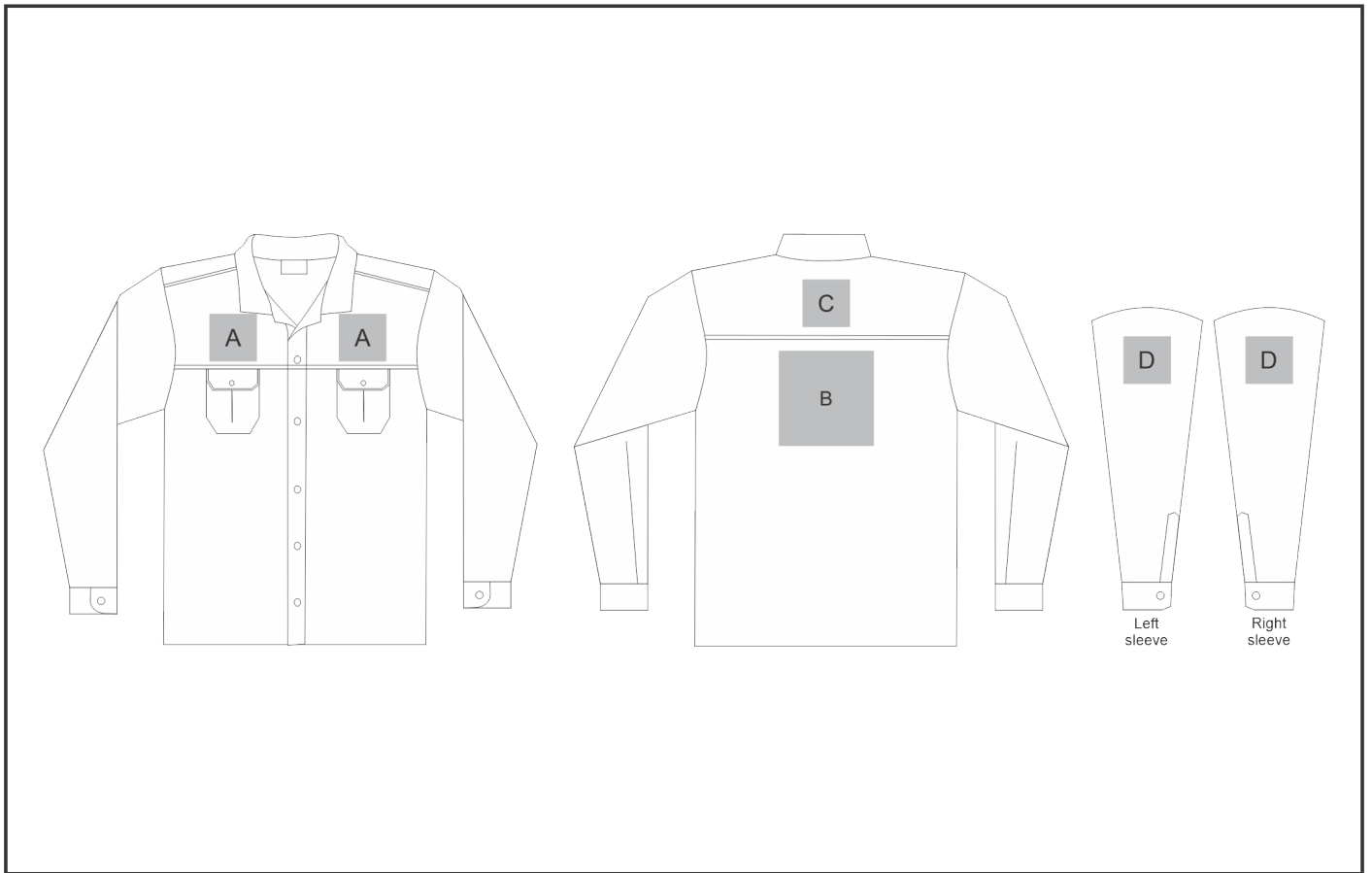


BAS-7762

Mens Long Sleeve Wildstone Shirt



Need to know:

- Includes 1-Position Embroidery OR 1 Position Digital Transfer (setup fee applies)
- Cannot guarantee a 100% straight branding on any clothing item with check or stripe detail
- **EMB/DTC Inclusive Parameters:** Left/Right Chest or Back = 100mm x 100mm

Branding Options:

Position A

1. Embroidery (EM-CLOTHING)
N/A
Size: 100mm wide x 100mm high
2. Digital Transfer Clothing A6 (DTC-A6)
Full Colour
Size: 100mm wide x 100mm high
3. Silicone (STP-A)
N/A
Size: 30mm wide x 30mm high
4. Silicone (STP-B)
N/A
Size: 50mm wide x 50mm high
5. Silicone (STP-C)
N/A
Size: 80mm wide x 80mm high
6. Silicone (STP-D)
N/A
Size: 100mm wide x 40mm high

Position C

1. Embroidery (EM-CLOTHING)
N/A
Size: 100mm wide x 100mm high
2. Digital Transfer Clothing A6 (DTC-A6)
Full Colour
Size: 100mm wide x 100mm high
3. Silicone (STP-A)
N/A
Size: 30mm wide x 30mm high
4. Silicone (STP-B)
N/A
Size: 50mm wide x 50mm high
5. Silicone (STP-C)
N/A
Size: 80mm wide x 80mm high
6. Silicone (STP-D)
N/A
Size: 100mm wide x 40mm high

Position B

1. Embroidery (EM-CLOTHING)
N/A
Size: 200mm wide x 200mm high
2. Digital Transfer Clothing A6 (DTC-A6)
Full Colour
Size: 105mm wide x 148mm high
3. Digital Transfer Clothing A5 (DTC-A5)
Full Colour
Size: 210mm wide x 148mm high
4. Silicone (STP-A)
N/A
Size: 30mm wide x 30mm high
5. Silicone (STP-B)
N/A
Size: 50mm wide x 50mm high
6. Silicone (STP-C)
N/A
Size: 80mm wide x 80mm high
7. Silicone (STP-D)
N/A
Size: 120mm wide x 40mm high

Position D

1. Embroidery (EM-CLOTHING)
N/A
Size: 80mm wide x 60mm high
2. Digital Transfer Clothing A6 (DTC-A6)
Full Colour
Size: 100mm wide x 100mm high
3. Silicone (STP-A)
N/A
Size: 30mm wide x 30mm high
4. Silicone (STP-B)
N/A
Size: 50mm wide x 50mm high
5. Silicone (STP-C)
N/A
Size: 80mm wide x 80mm high
6. Silicone (STP-D)
N/A
Size: 100mm wide x 40mm high